

## **Supplementary information**

# Evolution of local conductance pathways in a single-molecule junction studied by three-dimensional dynamic probe method

Atsushi Taninaka, Shoji Yoshida, Yoshihiro Sugita, Osamu Takeuchi, and Hidemi Shigekawa

Faculty of Pure and Applied Sciences, University of Tsukuba, Tsukuba 305-8571, Japan

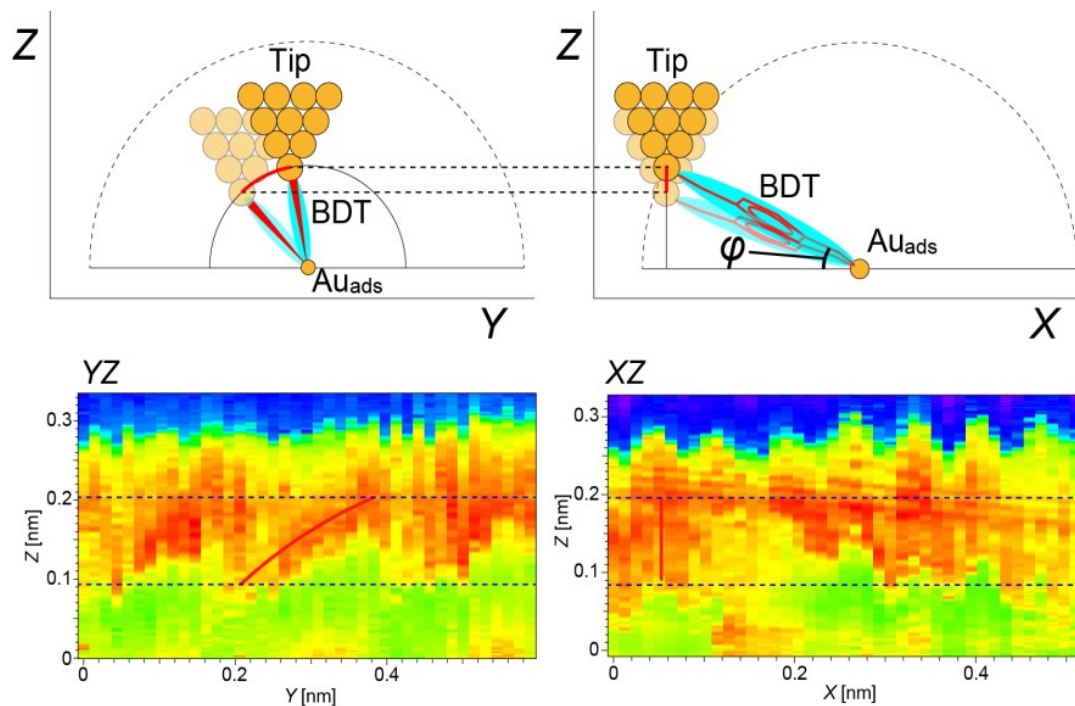


Fig. S1 **Schematic diagram showing determination of the adsorption angle.** Conformations of a BDT molecule and the *YZ* and *XZ* cross sections of the conductance map.  $\varphi$  represents the angle between the molecule and the substrate considering the direction of the molecule. Since the direction of the molecule is different from the *X*- and *Y*-axes in general, the apparent angle obtained from the *YZ* cross section is larger than the actual angle, which should be corrected using the relationship between the *YZ* and *XZ* cross sections with consideration of the angle of the molecule in the *XY* plane.